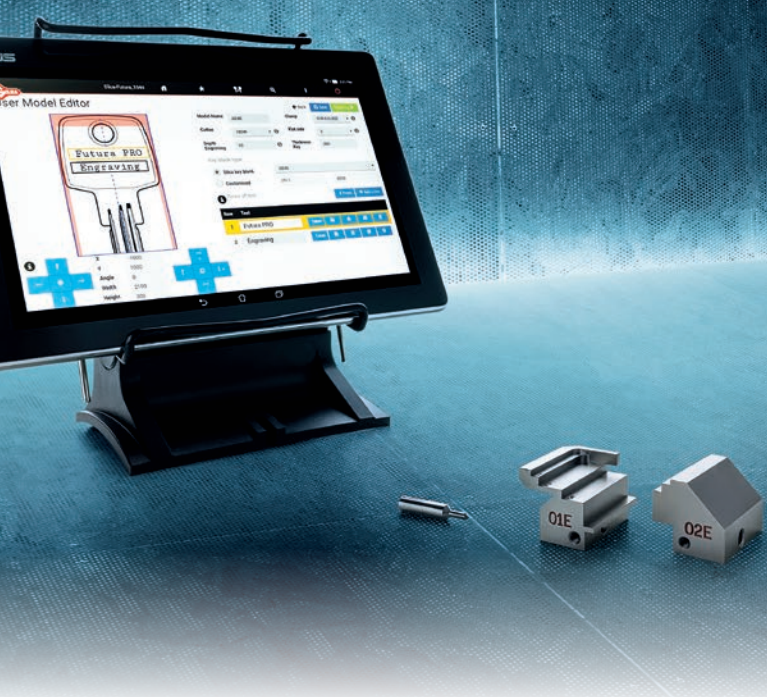


# Engraving

## Engraving Kit for Futura and Futura Pro



Further increase the capabilities of the Futura series electronic key cutting machines with the new Futura Engraving Kit. The kit is compatible with Futura, Futura PRO and Futura Pro One. Simply change the cutter and install the engraving jaws on the 01R clamp (dimple/laser side) to easily engrave keys, small medallions and plates.

### Kit Components

The special engraving jaws (01E and 02E) securely grip a vast array of metal and aluminum keys, small medallions and plates. These jaws feature 3 areas (or steps) for items of different dimensions:

1.02" - 1.26" X 1.57"	(26-32mm x 40mm)
.79" - 1.02" X 1.57"	(20-26mm x 40mm)
.32" - .55" X 1.57"	(8-14mm x 40mm)

The engraving cutter (18DW) engraves both metal and aluminum.

### Software

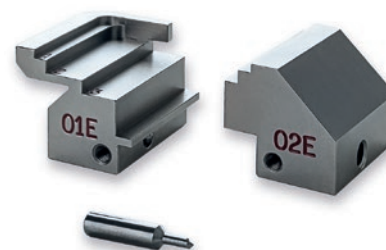
Engrave a variety of metal and aluminum keys, small medallions and plates. Software is pre-set to include over 220 default user templates (models) for keys, medals and plates and identifies the areas for inserting text.

The User Model Editor allows the user to "customize" an existing template to create new templates (models), not present in the database. Once created, the user can name and save the template for future use.

Each template allows you to select the depth of the engraving and indicates the jaw step you should use based on the dimensions of the key or tag being engraved.

Optimize processing with the job queues; simply set up the specific engraving parameters to begin the process and place it in the job queue for engraving at a later time.

The engraving software is FREE and will automatically load when performing a software update on the Futura (version 3.3.0) or Futura PRO (version 3.5.0).



### D749614ZB Futura Engraving Kit

Includes 01E Jaw, 02E Jaw and a 18DW Cutter

#### Central America:

Mexico, Guatemala, Belize, El Salvador, Honduras, Nicaragua, Costa Rica, Panama

#### Corporación Cerrajera Alba S.A. de C.V.

Prolongación avenida independencia 14, Bodega 5.  
Col. Los reyes, Tultitlán, Estado de México.  
C.P. 54915 • www.albailco.mx • Ph: 01.55.5366.7200

#### North America:

U.S.A., Canada, Caribbean Islands

#### Kaba Ilco Corp.

400 Jeffreys Road • Rocky Mount, NC 27804  
www.ilco.us • Ph: 800.334.1381 or 252.446.3321  
Fax: 252.446.4702



dormakaba Group